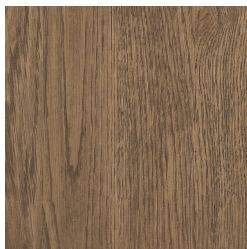


Finiture / Finishes

Naturali "poro aperto" / Natural "open pore"

Le tonalità delle riproduzioni fotografiche sono puramente indicative poiché
essendo prodotti artigianali sono realizzati a mano.
Attenzione: la finitura potrebbe risultare differente tra Rovere Materico e Rovere Liscio.

The shade of the shots are merely approximate,
since products are handmade.
It's worth considering that finishing could differ between Materico Oak and Smooth Oak.



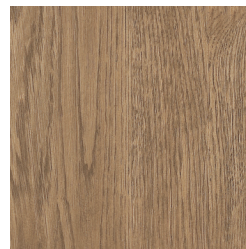
Tabacco



Nebbia



Holand antik



Holand gray



Holand naturale



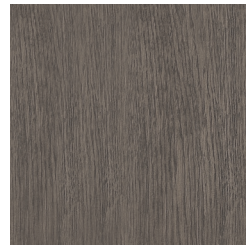
Effetto grezzo



Cenere



Quarzo



Rovere grigio



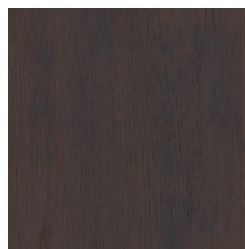
Naturale caramel



Carbone



Nordico



Dark brown

Finiture / Finishes

Laccati "poro aperto" / Laxquered "open-pore"



Rubino



Bordeaux



Cipria



Pesca



Baltico



Giada



Piacenza



Titanio



Acquamarina



Ghiaccio



White



Black



Ardesia



Corda



Ecrú



Gesso



Cuoio



Skin



Sky



Ottanio



Sabbia



Castagna



Pistacchio

Finiture / Finishes

Pelli- Cat. L - Look / Leather L Cat. - Look



Look - Col. 1502



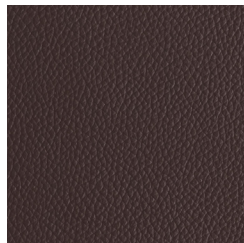
Look - Col. 1503



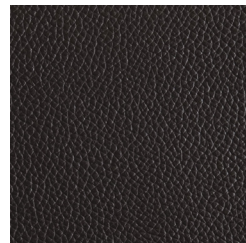
Look - Col. 104



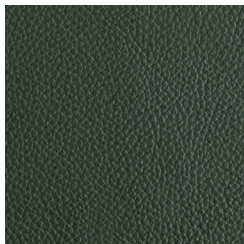
Look - Col. 1510



Look - Col. 1512



Look - Col. 1516



Look - Col. 1515



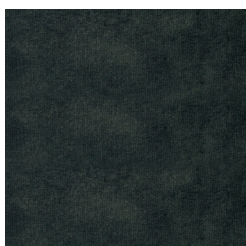
Look - Col. 1517

Finiture / Finishes

Tessuti - Cat. A - Palladium / Fabrics A Cat. - Palladium



Col. 4



Col. 11



Col. 14



Col. 17

Finiture / Finishes

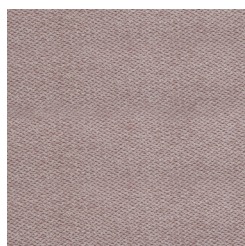
Tessuti - Cat. A - Enjoy Lux / Fabrics A. Cat - Enjoy Lux



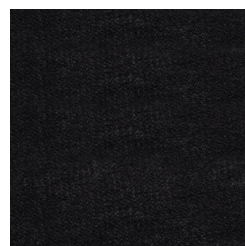
Col. 4



Col. 8



Col. 19



Col. 25

Finiture / Finishes

Tessuti - Cat. A - Fantasy / Fabrics A. Cat - Fantasy



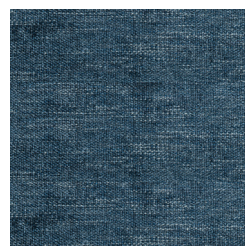
Col. 2



Col. 4



Col. 8



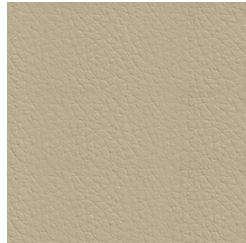
Col. 15

Finiture / Finishes

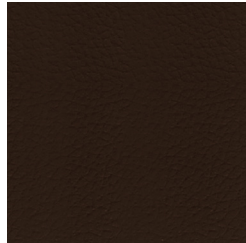
Ecopelli - Cat. A - Alias / Eco-leathers - A Cat.- Alias



Col. 100



Col. 102



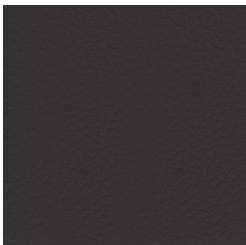
Col. 404



Col. 406



Col. 415



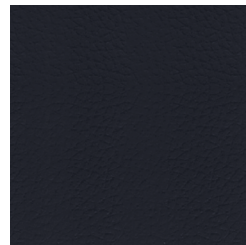
Col. 604



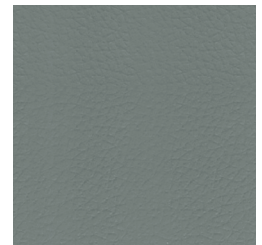
Col. 605



Col. 607



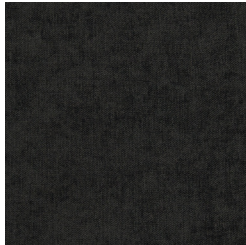
Col. 700



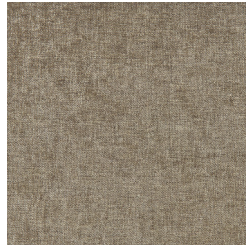
Col. 703

Finiture / Finishes

Tessuti - Cat. B - Callas / Fabrics B Cat. - Callas



Col. 801



Col. 904



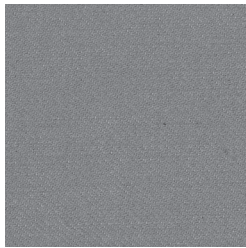
Col. 107



Col. 609

Finiture / Finishes

Tessuti - Cat. B - Oxana / Fabrics B. Cat - Oxana



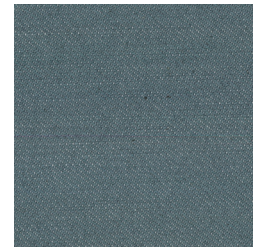
Col. 49



Col. 48



Col. 44



Col. 7