

BONALDO

Bonsai

Designer: Paolo Grasselli

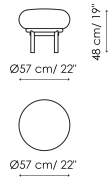


In the ancient botanical art of bonsai, a trunk of large dimensions supports and dialogues with an artfully shaped canopy. Similarly, Bonsai poufs are the result of a search to harmonise the volumes of the padding and the size of the frames: an essential metallic tubular frame, but with a wide section, welcomes and supports a comfortable seat with soft and rounded shapes, which enhances the

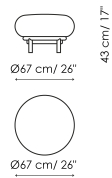
choice of the fabric or leather used for the upholstery. Available in four different sizes and heights, each of the Bonsai poufs can be chosen as a unique piece or combined in groups, freely combining multiple elements in the living area, the bedroom or in areas of hotels or public spaces intended for welcoming.



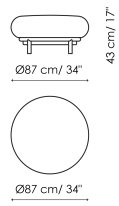
Data sheet



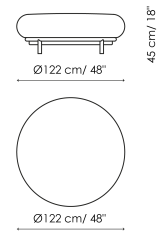
Width: 57cm
Depth: 57cm
Height: 48cm



Width: 67cm
Depth: 67cm
Height: 43cm



Width: 87cm
Depth: 87cm
Height: 43cm



Width: 122cm
Depth: 122cm
Height: 45cm

Cover

Fabric - 900



Fabric - Azimut
9B02



Fabric - Azimut
9B08



Fabric - Azimut
9B17



Fabric - Azimut
9B22



Fabric - Azimut
9B26



Fabric - Azimut
9B36



Fabric - Azimut
9B39



Fabric - Azimut
9B42



Fabric - Azimut
9B44



Fabric - Azimut
9B48

Fabric - Must



Fabric - Boemian
MC40



Fabric - Boemian
MC43



Fabric - Boemian
MC46



Fabric - Boemian
MC47



Fabric - Boemian
MC49



Fabric - Rico
MA02



Fabric - Rico
MA04



Fabric - Rico
MA07



Fabric - Rico
MA09



Fabric - Rico
MA11



Fabric - Rico
MA20



Fabric - Rico
MA22



Fabric - Rico
MC39



Fabric - St. Moritz
MC60



Fabric - St. Moritz
MC61



Fabric - St. Moritz
MC62



Fabric - St. Moritz
MC67



Fabric - St. Moritz
MC69



Fabric - St. Moritz
MC76



Fabric - St. Moritz
MC81



Fabric - St. Moritz
MC83



Fabric - St. Moritz
MC85



Fabric - Flora
MD30



Fabric - Flora
MD31



Fabric - Flora
MD32



Fabric - Flora
MD34



Fabric - Flora
MD35



Fabric - Flora
MD37



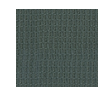
Fabric - Flora
MD39



Fabric - Nacchero
MD41



Fabric - Nacchero
MD44



Fabric - Nacchero
MD45



Fabric - Nacchero
MD47



Fabric - Nacchero
MD48

Fabric - Special



Fabric - Brionne
SP19



Fabric - Brionne
SP20



Fabric - Brionne
SP21



Fabric - Brionne
SP22



Fabric - Brionne
SP23



Fabric - Rella
SP01



Fabric - Rella
SP04



Fabric - Rella
SP05



Fabric - Rella
SP06



Fabric - Rella
SP07



Fabric - Diamon Frisé
SP31



Fabric - Diamon Frisé
SP33



Fabric - Diamon Frisé
SP34



Fabric - Diamon Frisé
SP36



Fabric - Diamon Frisé
SP38



Fabric - Baia
SP45



Fabric - Baia
SP48



Fabric - Baia
SP50



Fabric - Baia
SP51



Fabric - Baia
SP52

Leather



Leather Capri
L08



Leather Capri
L26



Leather Capri
L30



Leather Ponza
A01



Leather Ponza
A02



Leather Ponza
A03



Leather Ponza
A04



Leather Ponza
A05



Leather Ponza
A06



Leather Capri
L01



Leather Capri
L04



Leather Capri
L27



Leather Capri
L37



Leather Capri
L51



Leather Capri
L53



Leather Capri
L54

Base

Metal



Painted metal
Mat white



Painted metal
Mat dove grey



Painted metal
Mat anthracite grey



Metal
Supreme anthracite

Plus Metal



Painted metal
Mat bronze



Painted metal
Mat lead



Painted metal
Mat pearl gold

The samples above represent the complete range of materials and finishes available for this product (regardless of the top shape or size, in the case of tables). Fabrics, eco-leather, leather and emery leather shown in this website are a selection. Colors and finishes are approximate and may slightly differ from actual ones. Please visit Bonaldo dealers to see the complete sample collection and get further details about our products.